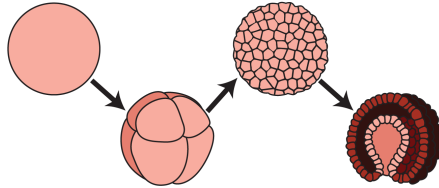


# Organizing Embryos

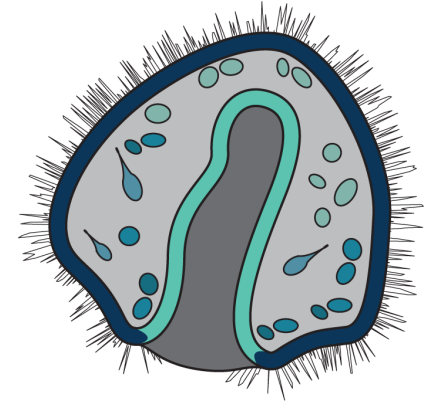
## Teacher Printout: Embryonic Development Cards

**C**

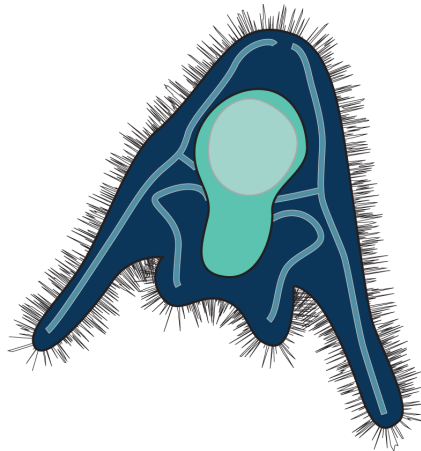
- Fertilized egg cells divide and multiply into gastrula.

**A**

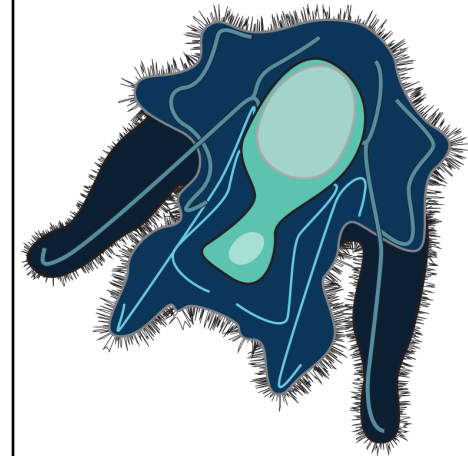
- Primitive digestive system forms.
- Nervous system begins to develop: neural ring forms.

**B**

- Larval arms form that aid in mobility and feeding.

**E**

- Larval arm, digestive and nervous system development continues.





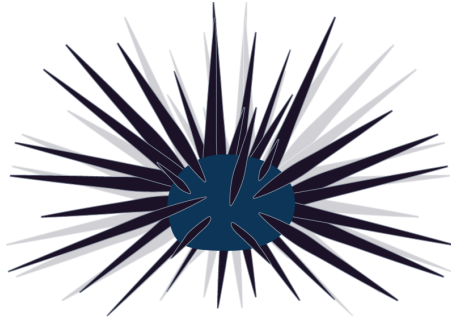
## Organizing Embryos

### Teacher Printout: Embryonic Development Cards



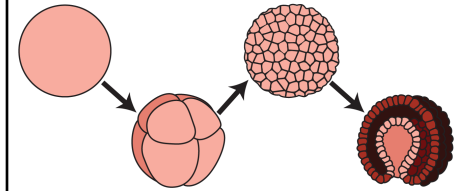
D

- Most of the larval body is cast off and juvenile body is fully formed.



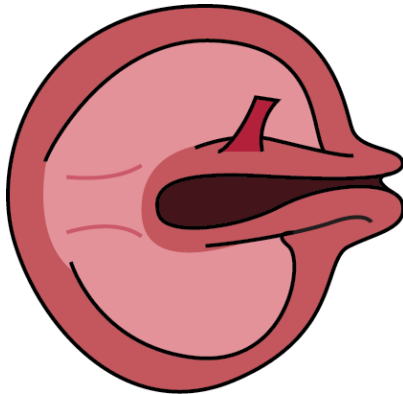
B

- Fertilized egg cells divide and multiply into gastrula.



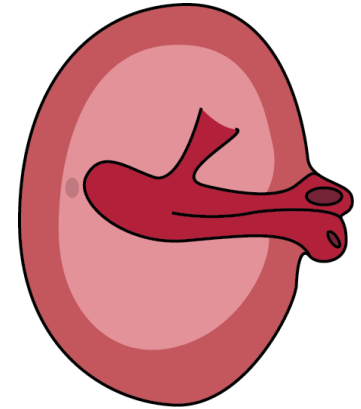
D

- Nervous system begins to develop: neural tube and notochord form.



A

- Head begins to form.
- Main blood vessels and heart begin to develop.
- Radial fin buds form.



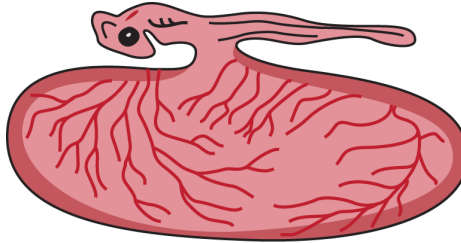


## Organizing Embryos

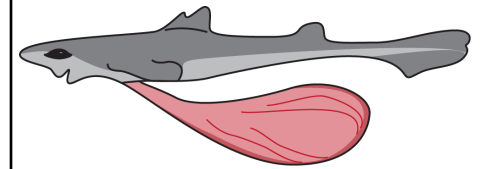
### Teacher Printout: Embryonic Development Cards



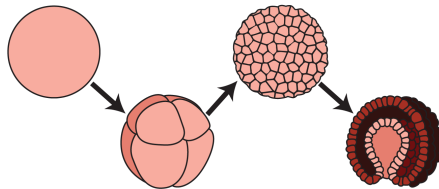
- Embryo forms more rigid stalk-like body.
- More blood vessels develop to feed the embryo.
- Eye develops.



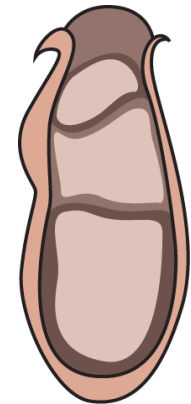
- Fins become fully developed.
- Eye development complete.
- Nervous system complete.



- Fertilized egg cells divide and multiply into gastrula.



- The head begins to take shape.
- The heart begins to form.
- Nervous system begins to develop: neural tube and notochord form.



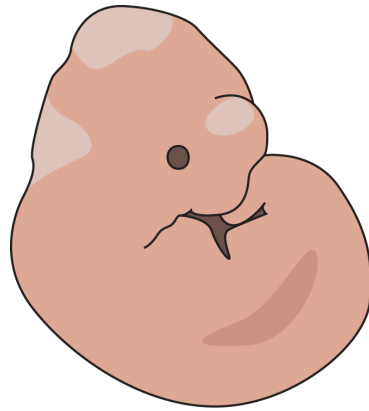


## Organizing Embryos

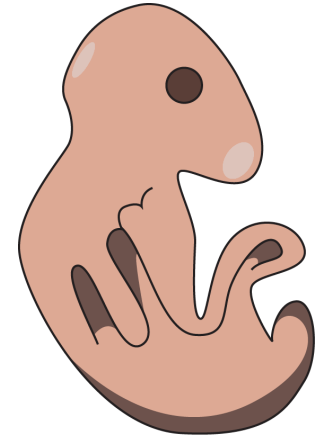
### Teacher Printout: Embryonic Development Cards



- Nasal processes begin to form.
- Formation of four limb buds.
- Nervous system continues to develop.



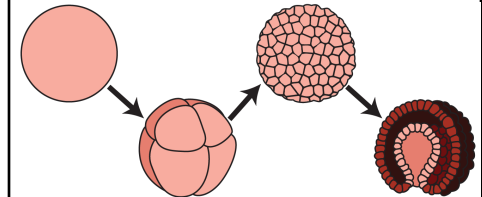
- Nasal pits start to form.
- Eye lens development nearly complete.
- Amniotic fluid continues to feed embryo.
- Early tooth development



- Skin thickens.
- Whiskers are visible.
- Fingers and toes separating; nails beginning to form.



- Fertilized egg cells divide and multiply into gastrula.



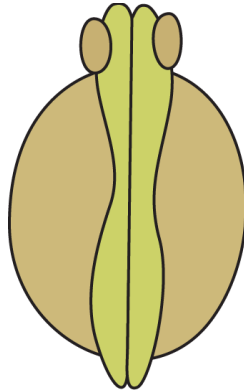


## Organizing Embryos

### Teacher Printout: Embryonic Development Cards

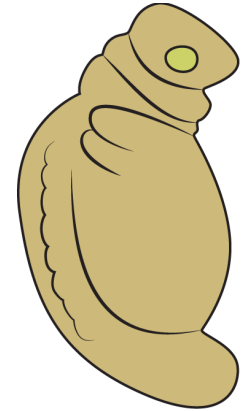
**B**

- Nervous system begins to develop: neural tube and notochord form.
- Eyes begin to form.



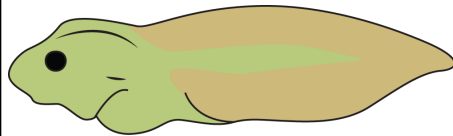
**C**

- Tail and spine more apparent.
- Gill slits evident.
- Formation of four limb buds.



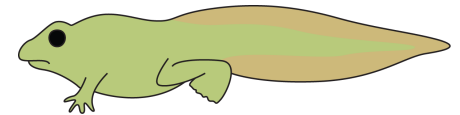
**D**

- Tail and limbs continue to grow.
- Eye development continues.
- Embryo releases from free-floating egg sac; continues development in open water.



**A**

- Limbs nearly fully formed.
- Eye and brain development mostly complete.
- Digestive system complete.

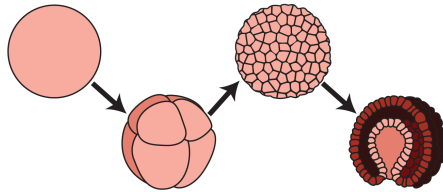


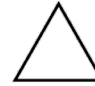
## Organizing Embryos

### Teacher Printout: Embryonic Development Cards

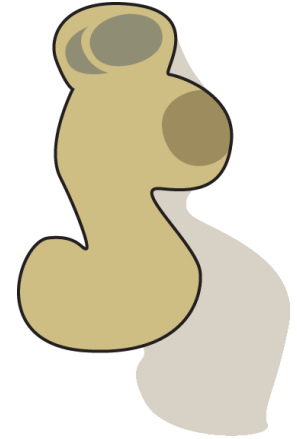
 D

- Fertilized egg cells divide and multiply into gastrula.



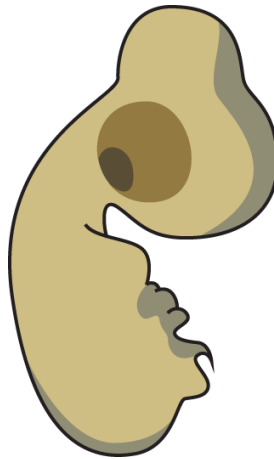
 A

- Nervous system begins to develop: neural tube and notochord form.
- Early eye development is visible.



 C

- Formation of tail bud
- Formation of four limb buds
- Eye and nervous system development continues.



 E

- Nasal pits start to form.
- Rapid brain growth and eye lens development nearly complete.
- Early egg tooth development
- Continued growth within amniotic egg sac





## Organizing Embryos

### Teacher Printout: Embryonic Development Cards



- Skin thickens.
- Feathers are visible.
- Fingers and toes further separating; nails beginning to form.





## Organizing Embryos

### Identity Cards

IDENTITY:

**SEA URCHIN**



IDENTITY:

**SHARK**



IDENTITY:

**FROG**



IDENTITY:

**MOUSE**



IDENTITY:

**CHICKEN**

